

A decorative graphic on the left side of the slide, consisting of several horizontal bars of different colors and lengths. From top to bottom: a long magenta bar, a dark purple bar, a medium purple bar, a light blue bar, and a medium blue bar. The bars are arranged in a staggered, descending pattern from left to right.

Foundations for our future

Stakeholder briefing: September 2024

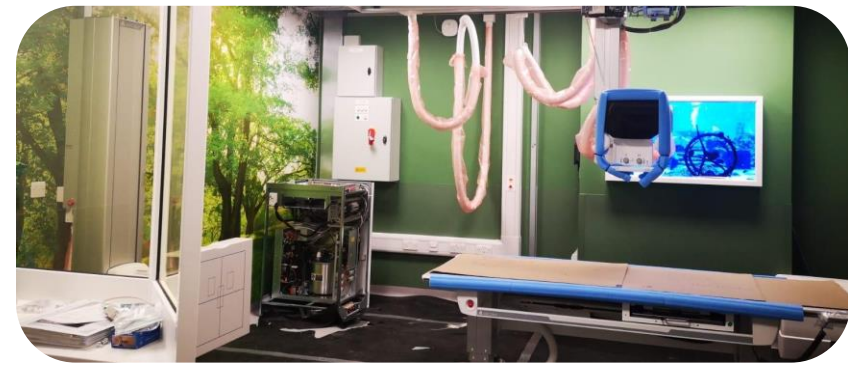
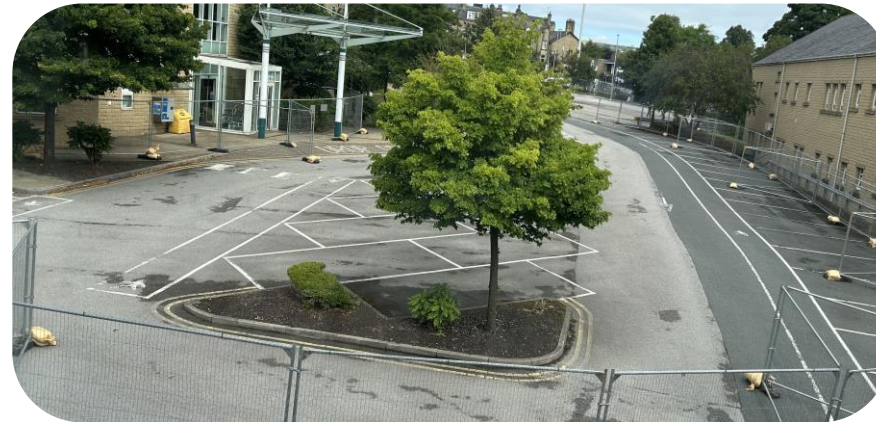
Contents

This stakeholder briefing provides an update on progress against our strategic investment projects between July and September 2024.

Item	Page
Highlights summary	3
Multi-storey car park	4
Learning and Development Centre	5-6
Calderdale Royal Hospital Clinical Build	7
Community Diagnostic Centres	8
Managing memorials and dedications at CRH	9

Highlights summary

- We are preparing the site to enable the construction of the multi-storey car park at CRH
- The new Learning and Development Centre is taking shape
- The design phase for the clinical build at Calderdale Royal is progressing



Multi-storey car park

- Work is underway to build a new, multi-storey car park at Calderdale Royal Hospital
- The main car park at the front of the hospital is now closed to allow ground enabling works to take place
- Patients and visitors are still able to park on site using the car parks via the Godfrey Road entrances
- For staff we have put in place park and ride facilities from several locations across Halifax and at Ainley Top
- The multi-storey car park will free up space to allow for future development of the new clinical building and ward areas
- The new car park will also significantly improve car parking provision at Calderdale Royal Hospital for patients, visitors and staff



Learning and Development Centre

The windows have been installed, internal walls have been fitted and are being plastered. The site has now been connected to the power grid and external stonework is underway.

Landscaping works are due to start late September, with the project due for completion late October.



Learning and Development Centre

Internal areas are designed to provide:

- Simulation teaching suites
- Flexible spaces for individual and group learning
- Library – providing flexible areas and all latest clinical journals and papers
- Kitchen facilities and rest areas

External areas are designed to provide:

- A building that will complement the existing surroundings
- Landscaped garden and planting to encourage wildlife
- Outdoor rest areas



Calderdale Royal Hospital

Alongside our construction partners, Laing O'Rourke, we have started to progress the design stage of the new clinical building and A&E at Calderdale Royal.

The project will deliver new adult's and children's accident and emergency departments with resuscitation bays and assessment rooms, as well as new inpatient wards.



Above: The coloured area in the artists' impression shows the scale of the build – it will almost double the footprint of the clinical space at CRH



Community Diagnostic Centres

- We opened our new Community Diagnostic Centre in Halifax to patients on Monday 22nd July.
- Located in Broad Street Plaza in central Halifax, the CDC provides community access to numerous diagnostic tests for patients across Calderdale.
- The aim of the CDC is to make diagnostic tests more readily available for our patients by providing a single point of access to a range of services in the community.
- Work is also underway to deliver a Community Diagnostic Centre on the University of Huddersfield campus, in a first-of-its-kind partnership.

Managing memorials and dedications at CRH

- A number of benches, sculptures and memorials are being relocated for safekeeping whilst construction work takes place at CRH.
- The well-known sculpture of three dancing girls has recently been relocated to an internal courtyard for safekeeping along with several benches.
- The scale of the hospital development is such that there will be construction work happening across the site for the next five years. Therefore, we have made the decision that no new memorials/dedications will be accepted during the construction works. This position will be reviewed annually.
- Our Charity will support people with other ways they can show remembrance including through donations or by sponsoring a dedication on our Tree of Memories (right).



A decorative graphic on the left side of the slide, consisting of several rounded rectangular bars in magenta, dark purple, and blue, arranged in a stepped pattern.

Questions and feedback