

A decorative graphic on the left side of the slide, consisting of several rounded rectangular bars in magenta, dark purple, and blue, arranged in a stepped pattern.

Foundations for our future

Stakeholder briefing: June 2024

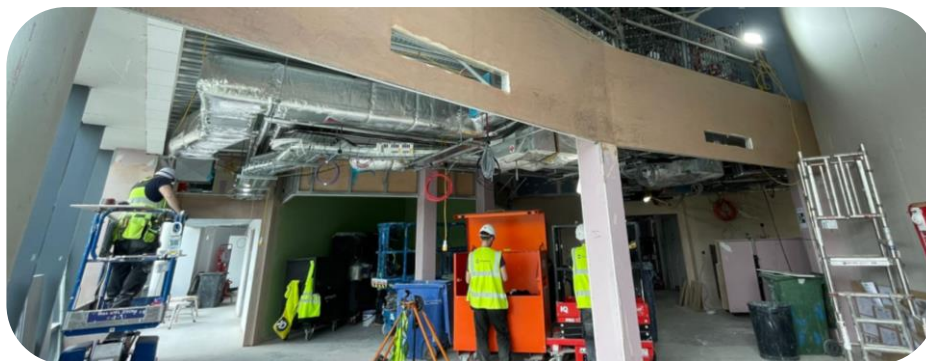
Contents

This stakeholder briefing provides an update on progress against our strategic investment projects between April and June 2024.

| Item | Page |
|---|-------|
| Highlights summary | 3 |
| Huddersfield Royal Infirmary A&E and wellbeing garden opening | 4-11 |
| CRH Multi-storey Car Park | 12 |
| Learning and Development Centre | 13-14 |
| Calderdale Royal Hospital | 15 |
| Community Diagnostic Centres | 16 |

Highlights summary

- HRI's new A&E has opened to the public
- The new Learning and Development Centre is taking shape
- Laing O'Rourke has been announced as our preferred construction partner for the design phase of the clinical build at Calderdale Royal





Huddersfield Royal Infirmary A&E

- The new A&E at Huddersfield Royal Infirmary opened to the public in the early hours of Wednesday 22nd May.
- The transition of the service from one building to the other went very smoothly and feedback from patients has been overwhelmingly positive
- A virtual tour of the new facility is available to view on the Trust's [YouTube channel](#). There is also a [children's video tour](#), told through the eyes and voice of a child.
- Local businesses, community groups and members of the public came together to celebrate the opening in a short film. [Watch "It's Our A&E" on YouTube.](#)





What our patients and colleagues think

Sister, Emmie Haxby, said: “It’s a really lovely space to work in, and the Majors area feels calmer for having more space. The noise levels are so much better than the old department.

“I also think that because there is more room to work in, that colleagues feel able to use their initiative, rather than relying on the Nurse in Charge to come up with solutions.

“Morale certainly feels like it has improved.”



What our patients and colleagues think

Advanced Clinical Practitioner, Elana Watson-Walker, said: “I feel like it’s something to be proud of. It’s an uplifting place to work, the environment is a lot fresher than before.

It’s taking a bit of getting used to the new layout but after a couple of shifts it felt like we’d all settled in.”



What our patients and colleagues think

Patient, Mark, said: It's clean and bright. Compared to the old A&E it feels like it's gone from being Victorian to modern."



HRI A&E official opening

An official opening ceremony and celebration event was attended by colleagues and partners.

The event ended with a tour of our new wellbeing garden, behind the new A&E.



Wellbeing garden

A new Wellbeing Garden, funded by our Charity for colleagues, patients and visitors at Huddersfield Royal Infirmary opened on Wednesday 5 July.

This space is split into seven zones, providing spaces for socialising and gentle exercise, as well as seclusion and reflection.



Adding value beyond construction



CRH Car Park

- Work is underway to build a new, multi-storey car park at Calderdale Royal Hospital
- Ground enabling works on the car park site are due to commence from July 2024
- During the works, patients and visitors will be able to park on site. For staff we have put in place park and ride facilities from several locations across Halifax and at Ainley Top
- The multi-storey car park will free up space to allow for future development of the new clinical building and ward areas
- The new car park will also significantly improve car parking provision at Calderdale Royal Hospital for patients, visitors and staff



Learning and Development Centre

The Learning and Development centre is a modular build and has now been crane-lifted onto site.

[A timelapse video of the construction between April and May 2024 shows the speed of the installation.](#)



Learning and Development Centre

Internal areas are designed to provide:

- Simulation teaching suites
- Flexible spaces for individual and group learning
- Library – providing flexible areas and all latest clinical journals and papers
- Kitchen facilities and rest areas

External areas are designed to provide:

- A building that will complement the existing surroundings
- Landscaped garden and planting to encourage wildlife
- Outdoor rest areas



Calderdale Royal Hospital

We have publicly announced Laing O'Rourke as our preferred partner to progress the design stage of the new clinical building and A&E at Calderdale Royal.

The project will deliver a new adult and children's accident and emergency department with resuscitation bays and assessment rooms, as well as new inpatient wards.



Above: The coloured area in the artists' impression shows the scale of the build – it will almost double the footprint of the clinical space at CRH



Community Diagnostic Centres

- Our new Community Diagnostic Centre (CDC) at Broad Street Plaza is already taking shape - just six months after building works started.
- In just 25 weeks, our construction partners, Integrated Health Projects (IHP), have laid foundations, installed drainage, constructed a structural steel frame and a first-floor concrete deck, and carried out a full internal fit-out, including partition walls and flooring.
- It is due to for completion in June, opening to patients in July.
- The aim of a CDC is to make diagnostic tests more readily available for our patients by providing a single point of access to a range of services in the community.
- Work is also underway to deliver a Community Diagnostic Centre on the University of Huddersfield campus, in a first-of-its-kind partnership.



A decorative graphic on the left side of the slide, consisting of several rounded rectangular bars in magenta, dark purple, and blue, arranged in a stepped pattern.

Questions and feedback