

# Foundations for our future

Stakeholder briefing: December 2025

# Contents

This stakeholder briefing provides an update on progress against our strategic investment projects between September and December 2025.

Item	Page
Highlights summary	3
Multi-storey car park	4
Clinical build at Calderdale Royal Hospital	5
Getting Calderdale Royal Hospital ready for construction	6
Social Value Legacy Plan	7
Developments at Huddersfield Royal Infirmary	8
Huddersfield Community Diagnostic Centre	9
Our journey	10-12
Further information	13

# Highlights summary

- New clinical building at Calderdale Royal Hospital has been granted full planning permission.
- The CRH site is getting ready for construction with a series of enabling work starting soon.
- The construction of the Multi-Storey Car Park is taking shape.
- A flythrough video of our new Huddersfield CDC is now available to watch.





# Multi-storey car park

- Good progress is being made on the new Multi-Storey Car Park at Calderdale Royal Hospital.
- Pre-cast concrete sections of the car park have been arriving on site throughout November and will continue arriving until the end of the year.
- The lift shafts and stairwells are now taking shape (see image below taken at the start of December).
- In early 2026, steel sections will start to be delivered on site.
- New hoardings have been put up to help people who go past the site know what's happening and where they can find more information.
- Once completed the car park will have more than 800 parking spaces, including electric charging points, extra blue badge spaces and cycle parking facilities.



# Clinical build at Calderdale Royal Hospital

- In October, our new clinical build at CRH gained reserved matters planning approval which means that the detailed designs for the building, such as its appearance, layout and landscaping, have been agreed.
- [You can read the full story on our website here.](#)
- Due for completion in 2029, the new building will include eight wards, and a new emergency department - with separate areas for adults and children.
- You can also [read a piece from ED Consultant and Clinical Lead for the Foundations for our Future Programme, Dr Mark Davies](#), about how the build will make a difference to the experience of colleagues, and how feedback has been used in the building design.

**Watch a short flythrough video on our YouTube channel which takes you through what the new building will look like.**





# Getting Calderdale Hospital ready for construction

- We are getting Calderdale Royal Hospital ready for the construction of our new hospital building. The work involves bringing essential services on site, such as power and water.
- Most of the work will be happening in our car parks and is expected to last around nine months.
- There will be information and signage on site which will direct patients and their visitors to available parking.
- All pedestrian routes around the hospital will be open.
- All services at CRH will continue to run as usual throughout the work.
- A communications plan is in place for our colleagues, patients and visitors, and our other stakeholders.
- We are also encouraging more people to sign up to our email updates. A new poster has been circulated to our stakeholders, [if you wish to print and display a copy, you can download it from our website here.](#)

  
Calderdale and Huddersfield  
NHS Foundation Trust

## We're getting ready to build our new hospital

Sign up for our regular updates to stay in the know on all the work happening at Calderdale Royal Hospital.



This can include progress updates, or important information you may need to know as one of our neighbours during construction.

Sign up using your email address by scanning the QR code, or visiting our website: [www.future.cht.nhs.uk](http://www.future.cht.nhs.uk)



  
Foundations  
for our future

# Social Value Legacy Plan

- Our new clinical building at CRH is a milestone development for the local area. Together with our construction partners, Laing O'Rourke, we will be delivering a [Social Value Legacy Plan](#) which shows how the project will deliver long lasting, positive impact in our communities, far beyond the physical footprint of the new hospital building.
- Through thoughtful planning and collaboration, we aim to create opportunities for local employment, support small and diverse businesses, reduce our environmental impact, and engage meaningfully with the communities we serve.
- The Plan has five key themes; sustainable employment, thriving local economies, healthy communities, inspiring future generations, and protecting our environment.
- Across the project, the Plan aims to deliver more than 1,500 weeks of apprenticeships, 1,000 hours of upskilling and training, 120 hours of community volunteering, as well as a commitment to reduce air pollution, carbon emissions and waste, to name a few.
- The Plan is also aligned to the objectives and goals identified in our CHFT five-year strategic plan, Calderdale Council and Kirklees Council health and wellbeing strategies, as well as economic strategies.
- You can also [read a story here from our Assistant Director of Transformation and Partnerships, Fran Hewitt, on what the plan means and how it will have a long-lasting impact.](#)

# Developments at Huddersfield Royal Infirmary

- Our plans for Huddersfield Royal Infirmary have included building a new A&E and by 2029 all planned care provided by CHFT will be located here.
- To support this there have been a lot of other developments at HRI over the last few years.
- Naming just a few, this work includes:
  - Our commitment to the environment and sustainability through the installation of EV charges, becoming an official NHS Forest Site and a Great British Energy grant to install rooftop solar panels.
  - Significant work to improve patient flow through our hospitals which has included the upgrade of our old A&E to provide a Same Day Emergency Care (SDEC) service and Integrated Flow Hub.
  - Refurbishment of our Intensive Care Unit, a new non-surgical oncology ward, and installing a new state of the art MRI scanner.
  - Supporting our colleagues for the future – including a new Learning Centre and Wellbeing Garden.
- You can [read about these developments on our website here](#).



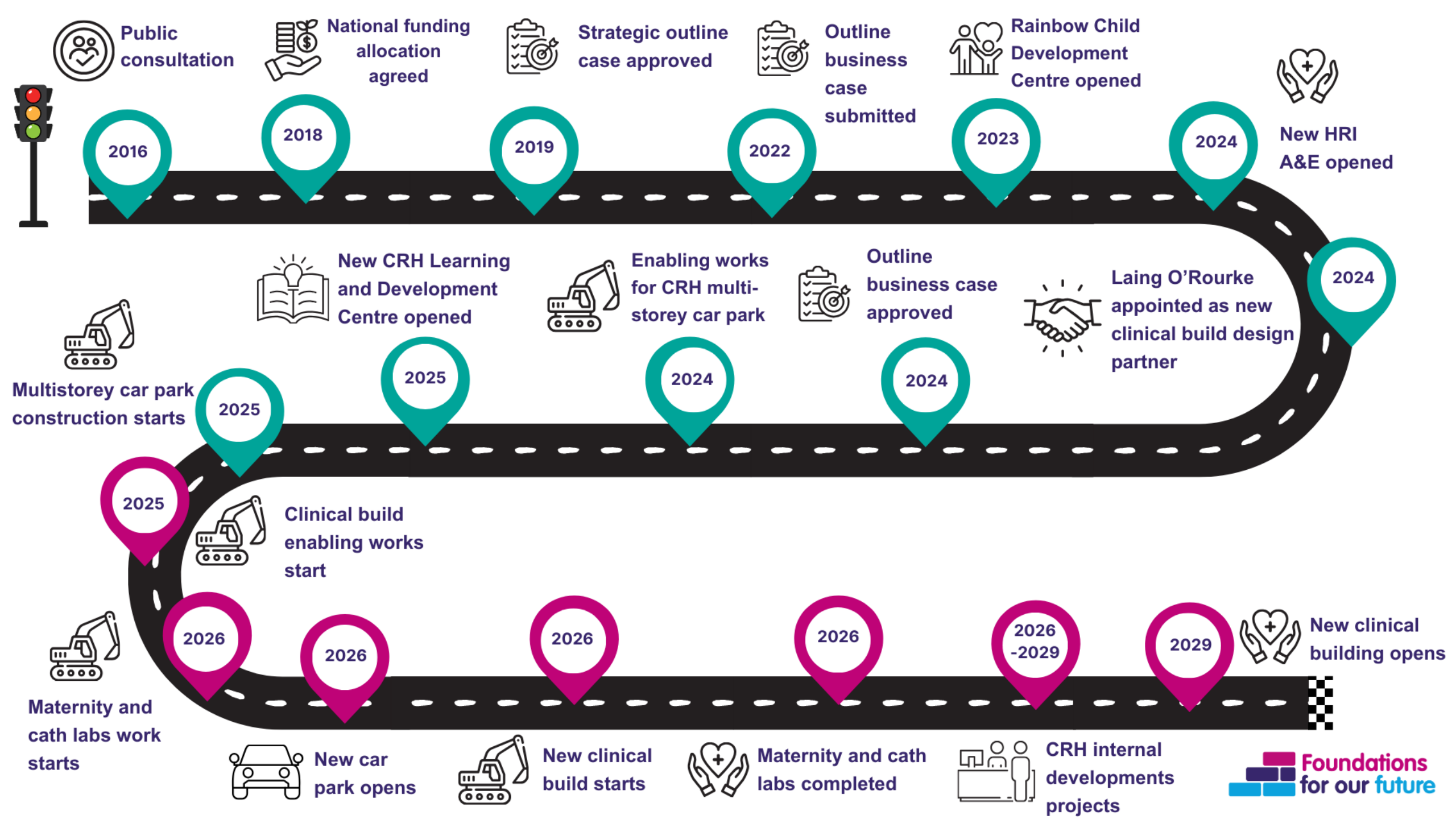
# Huddersfield Community Diagnostic Centre

- A [new flythrough video of the Emily Siddon building has been produced](#) which includes the CDC and other services and facilities which will be provided in the new building. The centre will be on a part of the [University of Huddersfield's National Health Innovation Campus \(NHIC\)](#).
- The CDC is due to open in early 2026. Once open it will give local people access to a wide range of diagnostic tests, including MRIs, CTs and X-Rays, as well as other cardiorespiratory tests and a tele-dermatology service.
- The central location will give patients more convenience and means they can be seen for tests closer to home, outside a hospital setting.
- The Daphne Steele Building, where the first phase of our CDC is now open, has achieved the esteemed [Platinum level WELL Certification](#), in recognition of its focus on health and wellbeing.
- Further communications, along with a stakeholder preview event in partnership with the University is being planned for the New Year ahead of the CDC opening.





# Our journey





# Where our services will be located



## Huddersfield Royal Infirmary

- 24/7 emergency department and clinical decision unit
- 24/7 urgent care centre
- 24/7 anesthetic cover
- diagnostics
- planned medical and surgical procedures
- outpatient services and therapies
- midwife-led maternity unit
- physician-led step down inpatient care



## Calderdale Royal Hospital

- 24/7 emergency department and Same Day Emergency Care
- 24/7 urgent care centre
- 24/7 anesthetic cover
- children's emergency department
- emergency diagnostics
- acute inpatient medical wards
- unplanned and complex surgery wards

## Supported by care closer to home

Centrally located Community Diagnostic Centres in Halifax and Huddersfield to run diagnostic tests and activity that would normally be done in hospital.

Community services in Calderdale supporting patient flow and delivering therapies from Dean Clough Mills, Halifax.

## Further information

If you would like us to present this information in a meeting, forum, or have any questions, please contact: [Ask.Reconfiguration@cht.nhs.uk](mailto:Ask.Reconfiguration@cht.nhs.uk)

All our Stakeholder Briefings can be found on our website: [Home - CHFT Future](#)